

Banner Mounting - Front of stage area

Power winch lift - Max weight 40 Kg.
 Max size banner top of stage - no side banners - 9mts L x 2.9 W.
 With side banners - Maximum 6.3 mts L x 1.5 W (this allows a 6mtr stage opening)

Angled side Banners - 3.4mtr L x 1.8 mtr W

STAGE
 3.0M X 7.2M
 Slide-Out Staging
 2.4m x 7.2m
 3mts x 1.8 mtrs -Wall Mounted powered projection screens located either side of stage Height to top of screens from floor 4.5 mtrs

Children's
 Play Area

AUDITORIUM
 19.50M X 32.0M X 9.0M HIGH

STAFF-ROOM

2.6M X 4.2M

3
 6.0M X 8.0M

2
 6.0M X 8.0M

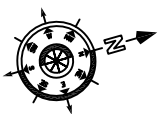
ENTRY
 7.0M X 5.0M

1
 7.35M X 8.0M

RESORT
 ADMINISTRATION

KEY

- Three Phase Outlets 32 amp 5 pin
 - Data Points
 - 240 Volt Power Outlets
 - ↓ Rated Eye Bolts - Lighting
1. If using 3 in one pulley to lift max load must NOT exceed 100kg
 2. If using block & tackle to lift max load must NOT exceed 200 kg.



Lower Floor Plan.

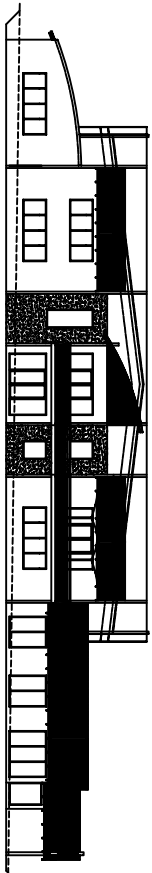
ENTRY

Upper Floor Plan.

4
 7.3M X 8.0M

5
 6.0M X 11.7M

6
 7.35M X 8.0M



AUDITORIUM & ADMINISTRATION AREA